



Flourish
Early Education

at Mid-Trent MAT



Why Flourish?

Flourish is a school-led early education setting, led by St. Peter's Church of England Primary School.

We understand that choosing a starting point for your child's learning adventures is one of the most important decisions you will ever make. Guided by our vision of 'Growing together through learning, faith and care', you can be assured that your child's wellbeing is always at the centre of our minds.

Flourish offers a warm and welcoming start to your child's education, led by a family of highly-experienced staff, each with a passion for early learning and play. We pride ourselves on creating a nurturing environment where children are supported to grow, not just academically, but also spiritually, morally, emotionally, culturally, socially and physically.

As part of the St. Peter's school family, Flourish benefits from two beautifully created early years spaces; purpose built facilities; a wealth of outdoor education opportunities in gardens, forests and fields and a seamless transition into the fantastic schools within the Mid-Trent MAT.

All the staff are amazing. There is a strong sense of community and I always feel very well informed!

Reception Parent, 2021



Our Vision

We believe in creating a safe, happy and nurturing Christian early years' environment, where every child is valued, cared for and supported to grow. With a commitment to providing the very **highest standards in Early Years education**, parents and carers are confident that their child will leave our setting as **happy, confident and resilient individuals**.

Every day, our children have the **freedom to play and explore** in an engaging environment, which stimulates **curiosity, imagination, language and social skills**. Through play, learners are encouraged to take risks, make mistakes and develop their metacognition and independence as little learners. Playing alongside our highly experienced Early Years' practitioners, children lead their own learning through their personal interests and this allows all to grow at their own pace, ensuring **positive attitudes to learning and school life** are nurtured from the earliest stage.

At flourish, we are a **family setting**, this means that we care deeply for every one of our children and are proud to be an inclusive Early Years' setting, which actively works to **remove barriers in learning for all** within our provision. We work closely with parents and a range of outside agencies, to ensure that every child is given the tools they need to succeed.

*Together, we give our
children roots to grow
and wings to fly*



The Flourish Family



Mrs Pilkington
Headteacher



Mrs Owens
Early Years Lead Teacher



Mrs Bourne
Pre-School Teacher



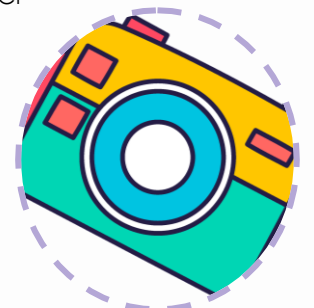
Miss Clare
Learning Assistant



Miss Amy
Room Leader



Miss Jo
Learning Assistant



Miss Nikki
Learning Assistant

Our Curriculum

As a setting we follow the Early Years Foundation Stage curriculum and firmly believe in learning through play.

We use exceptional stories and inspirational questions to set the themes of our learning adventures each week, but the learning that follows is led by the interests and passions of the children and pride ourselves on always being responsive to the needs of every child and planning carefully for their next steps.

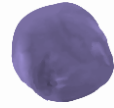
Your child's magical moments are captured within their online learning journal 'Evidence Me!' which is shared with parents at regular intervals throughout the school year.



There are 3 prime areas of learning within the Early Years Foundation Stage Curriculum and an additional 4 specific areas which come into effect once your child is ready.



Personal, Social and Emotional Development



Communication and Language



Physical Development



Literacy



Mathematics



Understanding the World



Expressive Arts and Design

Space to

Flourish



Nursery Room: Learners from the age of 2 begin their learning adventures within our Nursery class. This is a purpose built nursery space with its own outdoor play area and separate entrance and exit.

Preschool Room: Learners who are in their final year of Nursery and are getting ready to move into Reception continue their learning adventures in our Preschool class. This is a large open space within the main school building which benefits from close proximity to our reception learners in order to provide a seamless transition and opportunities for collaboration. A shared space is utilised for both settings and provides access to a newly re-furnished outdoor play space at the front of the school.

Forest School: Both settings benefit from access to the wonderful forest school area on site, equipped with messy play activities, mud kitchens and a fire circle for outdoor learning and adventures.

Outdoor Adventures: Here at Flourish, we are blessed with ample outdoor play spaces which we take full advantage of within our curriculum. These include a pirate ship, outdoor classroom, gardens, playgrounds and extensive fields.



*‘My children
are so happy at
this school’*

Reception Parent, 2021

Flourish Opening Hours

Early Education

As an Early Education setting, Flourish operates set session times each day to ensure continuity of your child's education. For this reason, we also ask that when children start accessing Government funded hours that these are used for daily morning or afternoon sessions, as this way we can guarantee your child's continual progress in setting.

| Flourish | Session Times |
|-----------|----------------------|
| Full Day | 9.00am – 3.30pm |
| Morning | 9.00am – 12.00noon |
| Lunch | 12.00 noon – 12.30pm |
| Afternoon | 12.30pm – 3.30pm |

Outside of nursery hours we are delighted to offer wraparound care within St. Peter's thriving Out of School Club for learners once they reach the age of 3.

| Wrap Around Care | Session Times |
|----------------------------|-----------------|
| Before School Session | 7.45am – 9.00am |
| Early After School Session | 3.30pm – 4.30pm |
| Late After School Session | 3.30pm – 5.45pm |



Fees and Funding

The government has numerous funding options available to support families with the cost of Early Years education and childcare. These include options for 15 and 30 hours childcare for 2, 3 and 4 year olds and the Think 2 funding scheme which provides 15 free hours of childcare for 2 year olds to eligible families. More information regarding funding which may be available for you can be found at www.childcarechoices.gov.uk and we urge you to speak with us if you need any help with applying.

Flourish prides itself on offering affordable Early Years education for all. As such, our nursery fees are reviewed each year to ensure that we are always offering the very best value for money. Please see our website for the most up to date nursery and wrap around fees: www.st-peters-hixon.staffs.sch.uk/flourish

Flourish^o Food

Daily morning and afternoon snacks are included within your session fees. These include fruit, milk and a variety of savoury snacks.



School lunches are available for all children as an additional charge of £2.47 per day. Lunch options include 2 hot dinners (meat and vegetarian), jacket potatoes and sandwiches each day. Children are also welcome to bring sandwiches from home.

Admissions and Applications

All of our nursery and preschool spaces are allocated on a first come, first served basis, irrespective of the funding used to pay for the provision. We accept applications throughout the year and will continue to allocate spaces in this way until we reach capacity.

Applications for a nursery or preschool space will only be considered once an application form has been completed and returned to the setting or the school office.

Application forms can be downloaded from our website or collected from the setting or school office.

Please note that admission into Flourish does not guarantee admission into St. Peter's Church of England Primary School when your child reaches Reception age. Admissions must be made through the local admissions authority as usual and are allocated in line with the school's admissions criteria.



Once capacity within the provision is reached, our published oversubscription criteria is used to allocate spaces as they become available. This criteria is published on our website.

How to find us:

Flourish is part of St. Peter's Church of England Primary School, Hixon and is easily accessible from all 3 of the Mid-Trent MAT Primary Schools (St. Andrew's, Colwich and St. Peter's).



(01889) 270233



www.st-peters-hixon.staffs.sch.uk/flourish/

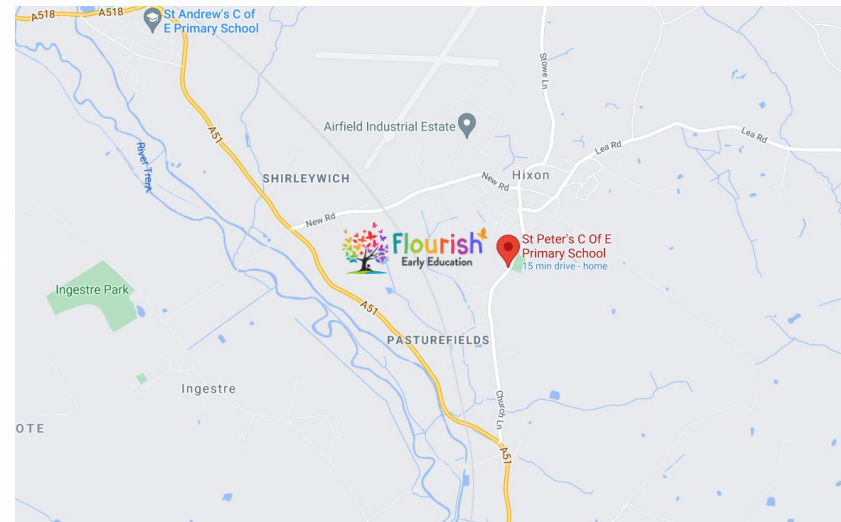


flourish@st-peters-hixon.staffs.sch.uk



Flourish at St. Peter's Primary School
Church Lane, Hixon
Staffordshire
ST18 0PS

Our Location



Click on the map to enlarge